

# When You Want to **Win**, Get the **1**

## When Your Animal Needs:

- An effective rate of gain
- A great-looking finish
- Impressive muscling



## *The secret behind countless wins across the country.*

**Z1L for Meat Rabbits** is a special blend of our Original Oxy-Gen® formula, including gamma oryzanol and beta glucans. Formulated for owners and breeders wanting to enhance their animal's top shape and thickness, Z1L is safe for all rabbits, and is even safe for breeding animals. And since there's no withdrawal necessary, you can use Z1L even on the day of the show without worrying about testing.

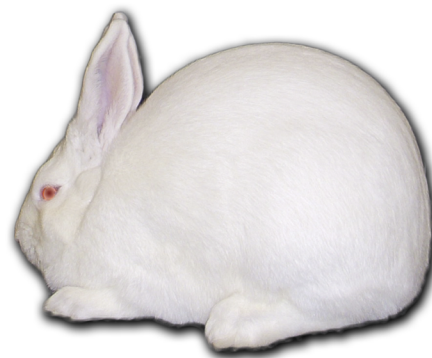
After 40 days +/-, animals can be maintained by feeding it half-rate, with no impact on bloom, even during hauling or showing.

## GUARANTEED ANALYSIS:

Crude Protein, min	15.50%
Crude Fat, min	1.60%
Crude Fiber, max	6.00%
Vitamin E, min	2600 IU/lb

Available in the following sizes

1.88 lb Bag  
11.25 lb Bag  
50 lb Pail

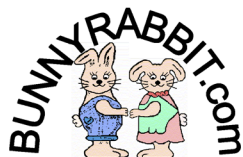


**INGREDIENTS:** Grain Products, Plant Protein Products, Forage Products, Dried Yeast, Wheat Germ Meal, Vitamin E Supplement, Dried Potato Products, Calcium Citrate, Potassium Sulfate, Manganese Sulfate, Zinc Sulfate, Copper Sulfate, Cobalt Sulfate, Dried Lactobacillus acidophilus Fermentation Product, Dried Lactobacillus casei Fermentation Product, Dried Lactobacillus plantarum Fermentation Product.

## **FEEDING INSTRUCTIONS:**

(Begin feeding animal 20-40 days prior to final show.)

Feed at the rate of 1/16 ounce (2 grams), approximately 5-6 pellets, per head per day.



Manufactured by **Meal and More, Inc**  
Morrice, MI 48872  
866-469-9227



"the biggest little store in the country"